



A Comparative Study of Landsat TM and SPOT HRG Images for Vegetation Classification in the Brazilian Amazon

Dengsheng Lu, Mateus Batistella,
Emilio F. Moran, and Evaristo E. de Miranda

Reprinted from:

Photogrammetric Engineering & Remote Sensing 74(3):311-321 (2008)

A Comparative Study of Landsat TM and SPOT HRG Images for Vegetation Classification in the Brazilian Amazon

Dengsheng Lu, Mateus Batistella, Emilio Moran, and Evaristo E. de Miranda

Abstract

Complex forest structure and abundant tree species in the moist tropical regions often cause difficulties in classifying vegetation classes with remotely sensed data. This paper explores improvement in vegetation classification accuracies through a comparative study of different image combinations based on the integration of Landsat Thematic Mapper (TM) and SPOT High Resolution Geometric (HRG) instrument data, as well as the combination of spectral signatures and textures. A maximum likelihood classifier was used to classify the different image combinations into thematic maps. This research indicated that data fusion based on HRG multispectral and panchromatic data slightly improved vegetation classification accuracies: a 3.1 to 4.6 percent increase in the kappa coefficient compared with the classification results based on original HRG or TM multispectral images. A combination of HRG spectral signatures and two textural images improved the kappa coefficient by 6.3 percent compared with pure HRG multispectral images. The textural images based on entropy or second-moment texture measures with a window size of 9 pixels \times 9 pixels played an important role in improving vegetation classification accuracy. Overall, optical remote-sensing data are still insufficient for accurate vegetation classifications in the Amazon basin.

Introduction

The moist tropical forests in the Amazon have special importance in the biodiversity and climate of the world. High deforestation rates in the Amazon have been associated with the expansion of highways and roads and the growth of Amazonian cattle ranching and soybean farming (Skole *et al.*, 1994; Laurance *et al.*, 2004). Large areas of primary forests have been converted into a mosaic of agricultural lands, pastures, and different successional formations (Lucas *et al.*, 2000; Roberts *et al.*, 2002). The unprecedented

tropical deforestation rates have been regarded as an important factor in the climate change and environmental degradation at regional and global scales (Skole *et al.*, 1994). In order to better understand the consequences caused by deforestation and landscape transformations in the region, an international research program called Large Scale Biosphere-Atmosphere Experiment in Amazonia (LBA), has been carried out since 1997 (<http://lba.cptec.inpe.br/lba/>). Through this program, an important research topic is the mapping and monitoring of land-use/land-cover changes. A research team from the USA (Indiana University and Indiana State University) and Brazil (Embrapa: Brazilian Company of Farming Research and INPE: National Institute of Space Research) has made great efforts to improve the accuracy of vegetation classifications, especially successional vegetation classification (Mausel *et al.*, 1993; Moran *et al.*, 1994; Brondízio *et al.*, 1996; Lu, 2005a).

In the moist tropical regions, complex forest stand structure and abundant tree species often cause difficulties in classifying vegetation classes using remotely sensed data. Most previous research in the moist tropical regions provided only coarse vegetation classes, such as primary forest and successional vegetation (Adams *et al.*, 1995; Roberts *et al.*, 2002). However, the biomass densities of different successional stages vary considerably, ranging from less than 2 kg/m² in initial successional vegetation to greater than 20 kg/m² in advanced successional vegetation (Lu, 2005b). The biomass densities of primary forests also vary considerably, ranging from approximately 12 kg/m² to greater than 50 kg/m² due to different environments. Obviously, a single class of primary forest or successional vegetation is not suitable for many applications such as carbon estimation or land degradation assessments. Lu (2005a) has provided a detailed summary of the previous efforts on vegetation classification using field measurements and satellite images. A new approach based on the complexity of forest stand structure was then developed for successional vegetation classification. But in practice, the collection of a large number of field measurements, including vegetation stand attributes (e.g., height, diameter at breast height), is often very challenging, especially in the Brazilian Amazon due to the difficult access to some remote areas and the intensive labor required in an environment characterized by such high

Dengsheng Lu is with the School of Forestry and Wildlife Services, Auburn University, 602 Duncan Drive, Auburn, AL 36849 (luds@auburn.edu).

Mateus Batistella and Evaristo E. de Miranda are with the Brazilian Agricultural Research Corporation, Embrapa Satellite Monitoring, Campinas, São Paulo, Brazil.

Emilio Moran is with the Center for the Study of Institutions, Population, and Environmental Change (CIPEC), Indiana University, Bloomington, IN, and the Anthropological Center for Training and Research on Global Environmental Change (ACT), Indiana University, Bloomington, IN.

Photogrammetric Engineering & Remote Sensing
Vol. 74, No. 3, March 2008, pp. 311–321.

0099-1112/08/7403-0311/\$3.00/0
© 2008 American Society for Photogrammetry
and Remote Sensing

biodiversity. Thus, it is important to find a suitable approach for improving vegetation classification performance based on the use of remote-sensing features, such as spectral, spatial, and temporal characteristics to address these needs. Without accurate land-cover classification, estimates of biomass and carbon are fraught with degrees of error that make modeling subject to unacceptable uncertainties.

Time series of Landsat Thematic Mapper (TM) data have been extensively used for land-cover or vegetation classification in the moist tropical regions (Mausel *et al.*, 1993; Moran *et al.*, 1994; Adams *et al.*, 1995; Foody *et al.*, 1996; Brondízio *et al.*, 1996; Roberts *et al.*, 2002; Vieira *et al.*, 2003; Lu *et al.*, 2004), but a fine vegetation classification based on the medium spatial resolution images have proven difficult. Although higher spatial resolution data, such as SPOT High Resolution Visible (HRV), and recently SPOT High Resolution Geometric (HRG) instrument data are readily available, they are frequently used for urban-related studies (Marceau *et al.*, 1990; Gong *et al.*, 1992; Shaban and Dikshit, 2002), and their roles for improving vegetation classification, especially in the moist tropical regions have not been examined in detail. Increased spatial resolution considerably reduces the mixed pixel problem, and effective use of spatial information may improve detailed vegetation classification accuracies. Two image processing techniques for making use of the higher spatial resolution information are often used for improving land-cover classification performance. One approach is based on data fusion through the integration of multispectral and high spatial resolution information. Previous research has explored the data fusion approaches for improvement of land-cover or vegetation classification (Welch and Ehlers, 1987; Yocky, 1996; Haack *et al.*, 2002). The second approach is to use the spatial information inherent in high spatial resolution imagery. In particular, textures have proven useful in improving land-cover classification accuracy (Marceau *et al.*, 1990; Shaban and Dikshit, 2001; Chen *et al.*, 2004). Many texture measures have been developed since the 1970s (Haralick *et al.*, 1973; Kashyap *et al.*, 1982). Of the many texture measures, the grey-level co-occurrence matrix (GLCM) texture measure is frequently used.

In the moist tropical regions, the classification of detailed vegetation classes with remotely sensed data is still very difficult and the use of higher spatial resolution images in improving vegetation classification accuracy is poorly understood. Hence, this paper aims to explore the possibility of mapping fine vegetation classes through a comparative analysis of different image combinations, such as the incorporation of the spectral features in the Landsat TM image and the spatial features in the SPOT HRG image, as well as the combinations of textures and spectral signatures. A maximum likelihood classifier was used to classify different image combinations into thematic maps, followed by an accuracy assessment using reference data to evaluate the classification performance and to identify suitable image processing procedures for vegetation classification in the study area.

Study Area

The study area is located at Machadinho d'Oeste in northeastern Rondônia (Figure 1). A well-defined dry season lasts from June to August. The annual average precipitation is 2,016 mm and annual average temperature is 25.5° C (Rondônia, 1998). The terrain is undulating, ranging from 100 to 450 m above sea level. Several soil types, mainly alfisols, oxisols, ultisols, and alluvial soils, have been identified (Bognola and Soares, 1999). Although Machadinho d'Oeste has a specific institutional and

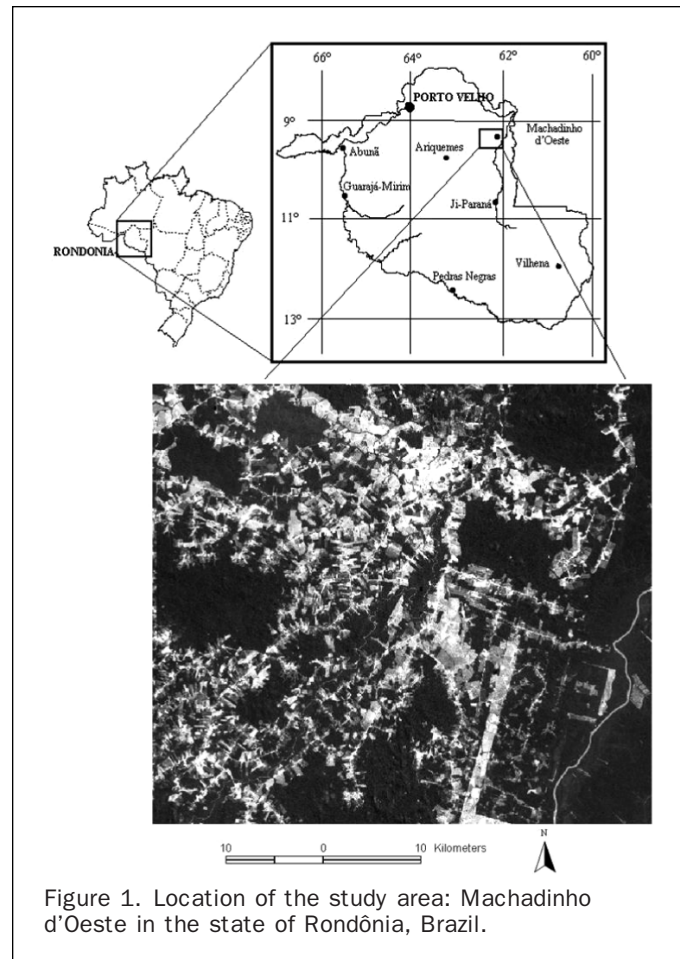


Figure 1. Location of the study area: Machadinho d'Oeste in the state of Rondônia, Brazil.

architectural design (Batistella *et al.*, 2003), the study area is representative of rural settlements in the Amazon and mimics the dynamics of deforestation and land-use cycles found in other parts of the region, specifically in the state of Rondônia.

The settlement of Machadinho d'Oeste covers about 2,000 km² and is adjacent to the borders with the states of Amazonas and Mato Grosso. The major deforestation began in late-1980s. Due to land-use intensification, most successional vegetations are in the initial and intermediate stages, and limited areas are in the advanced stage. The majority of successional vegetation has biomass density of less than 15 kg/m², but most of the primary forest has biomass density greater than 20 kg/m² (Lu, 2005a). In deforested areas, pastures, perennial crops (e.g., coffee, cocoa), agroforestry (e.g., cocoa associated with the rubber tree), and small fields of annual crops are the most common land-uses. Because of the high temperature and precipitation, the soil nutrients are lost rapidly and soil erosion can be severe, thus the land degrades rapidly if not properly used, resulting in the land being left to fallow, setting the stage for the return of successional vegetation. Settlers, rubber tappers, and loggers inhabit the area, transforming the landscape through their economic activities and use of resources (Batistella, 2001). Farming systems are mainly household-based, and little depends on larger group efforts. Rubber tappers have rights over communal forest reserves where they practice extraction. Loggers play a major role in providing access to remote areas within the settlement as they open trails through the forest to reach valuable species.

Methods

Before implementing field data collection and image classification, a suitable vegetation classification system was required. The selection of a vegetation classification scheme was motivated by two factors: our previous experience in vegetation classification since the mid-1990s (e.g., Mausel *et al.*, 1993; Brondizio *et al.*, 1996; Lu *et al.*, 2004) and the requirement of detailed vegetation information for our Amazonian research (Batistella and Moran, 2005). Table 1 summarizes the major characteristics of the vegetation classification system used in this study. Pastures were separated from other vegetation classes based on the percentage of grass cover and the limited presence of seedlings and saplings. Successional vegetations were assigned solely to the vegetation areas where grass cover was less than 25 percent, which generally occurred in sites that had been abandoned for more than two years. The separation of different successional stages was based on stand structural parameters: biomass and averages of forest stand diameter and height. The primary forest was separated into upland dense forest, upland open forest, and flooding forest based on biomass density, moist conditions, and topographic factors. The coffee and cocoa plantations and the association of these species with other economic or successional species were grouped as an agroforestry/perennial agriculture class.

Field Data Collection

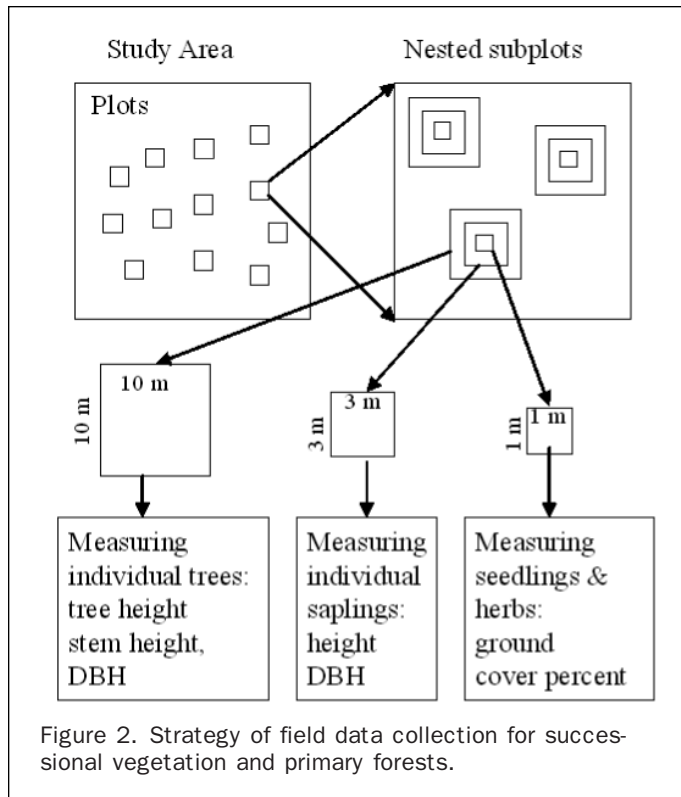
Our first fieldwork in this study area was conducted during the dry season of 1999. Preliminary image classification, based on a 1998 TM image and band composite printouts, indicated candidate areas to be surveyed, and a flight over the areas provided visual insights about the size, condition, and accessibility of each site (Batistella, 2001). The surveys were carried out in areas with relatively homogeneous ecological conditions (e.g., topography, distance from water, and land-use) and uniform physiognomic characteristics. After defining the area to be surveyed (plot sample), three nested subplots (1 m², 9 m², and 100 m²) were randomly selected to accurately represent the variability within the plot sample (Figure 2). A detailed description of field data collection methods is found in Batistella's dissertation (2001). During fieldwork, stand parameters, such as total tree height and diameter at breast height, in 26 sample plots covering different stages of successional vegetation and 14 sample plots covering primary forests were measured in this study area. These measurements were analyzed for separation of different successional stages and primary forest classes with the Canonical discriminant analysis (Lu *et al.*, 2003a).

The majority of fieldwork was conducted in August 2002 and August 2003. During fieldwork in August 2002, an Ikonos color composite (acquired on 28 May 2001) was used

TABLE 1. CHARACTERISTICS OF VEGETATION TYPES

Vegetation Types	Parameters	Main Characteristics
Cultivated pasture (CUP)	Grass > 75%	Pastures managed to keep the dominance of grass species
Degraded pasture (DGP)	Grass ranges from 25% to 75%	Limited seedlings and saplings appeared in the ground
Agroforestry/Perennial agriculture (AGF)		Coffee, rubber, banana, cacao plantations or their association with other economic or non-economic species
Initial succession (SS1)	ASD: 2 to 5 ASH: 2 to 6 AGB: 0.5 to 5 Age: 1 to 5	Herbaceous plants, seedlings, and saplings together are responsible for over 90 percent of total biomass, with a vertical structure characterized by a full profile of saplings and herbaceous plants. Saplings are the main structure element and represent the majority of the aboveground biomass.
Intermediate succession (SS2)	ASD: 5 to 15 ASH: 6 to 12 AGB: 4 to 10 Age: 4 to 15	Saplings still account for most of the biomass in SS2. Vegetation structure provides a mix of dense ground cover of saplings and young trees with higher canopy than SS1 and small internal differences between canopy and understory individuals. Stratification between canopy and understory begins in SS2.
Advanced succession (SS3)	ASD: 10 to 25 ASH: 9 to 17 AGB: 8 to 25 Age: 10 to 50	Stratification is obvious in SS3 with trees dominating the canopy. In this stage, there is a major shift in structure that differentiates understory from canopy individuals; that is, the presence of saplings is less significant than that of trees. One can find differences between the canopy and understory in terms of height and density of species.
Upland dense forest (UDF)	ASD: 17 to 30 ASH: 12 to 25 AGB: 20 to 50	In a typical primary forest, trees account for the majority of the aboveground biomass, reaching over 90 percent. Large trees occupy the canopy. Trees with DBH of 25 to 30 cm dominate, and a considerable number of individuals have a DBH over 40 cm. Many tree individuals are taller than 17 m and some between 25 and 30 m are present, followed by a few scattered emergent individuals over 35 m high.
Upland open forest (UOF)	ASD: 12 to 20 ASH: 10 to 15 AGB: 10 to 20	Usually located in the areas with steep slopes and poor soil conditions
Flooding forest (FLF)	Similar with UDF	Usually located along water courses with seasonal flooding conditions

Note: ASD and ASH represent average stand diameter (cm) and average stand height (m), AGB means aboveground biomass (kg/m²), and DBH means diameter at breast height.



to assist field data collection for different successional stages, agroforestry/perennial agriculture, and degraded and cultivated pastures. In August 2003, a SPOT HRG color composite was used to assist collection of more ground data. Every sample plot was registered with a global positioning system (GPS) device to allow further integration with spatial data in both geographic information systems (GIS) and image processing systems. Some primary forest sample plots were identified with visual interpretation of Ikonos or HRG color composite based on our field experiences. The collected sample plots were then separated into two groups: one group to be used for training samples in the maximum likelihood classification, and another group to be used for assessing classification results.

Image Data Collection and Preprocessing

Two sensor data, Landsat-5 TM and SPOT5 HRG, were used in this research. The TM image with 30-meter spatial resolution has six bands, covering three visible bands (blue, green, and red), one near-infrared (NIR) band, and two shortwave-infrared (SWIR) bands. The HRG image has five bands, covering one panchromatic band with 5-meter spatial resolution, two visible (green and red) bands, one NIR band with 10-meter spatial resolution, and one SWIR band with 20-meter spatial resolution. The TM image was acquired on 08 July 2003 with sun elevation angle of 42.966° and sun azimuth angle of 45.719°. The HRG image was acquired on 26 June 2003 with sun elevation angle of 51.065° and sun azimuth angle of 31.848°. Both sensor data were acquired during the dry season with similar climate conditions. Ikonos data (4-meter spatial resolution), acquired on 28 May 2001, were employed during the fieldwork to assist the collection of sample plots for different vegetation classes.

Accurate image registration and atmospheric correction are two important aspects in an image preprocessing procedure. Image-to-image registration between TM and HRG images was conducted, using the HRG image as a reference image, so

that both TM and HRG images have the Universal Transverse Mercator coordinate system. A nearest-neighbor algorithm was used to resample the TM images to 30-meter spatial resolution. A registration error of 0.1816 pixels (x error: 0.1409, y error: 0.1145) for the TM image was obtained during image registration.

Many approaches, ranging from simple relative calibration and dark-object subtraction to complex model-based calibration approaches (e.g., the 6S radiative transfer code for atmospheric correction), have been developed for radiometric and atmospheric normalization or correction (Chavez, 1996; Vermote *et al.*, 1997; Tokola *et al.*, 1999; Song *et al.*, 2001; Canty *et al.*, 2004). Because the dark-object subtraction approach was strictly an image-based procedure, and corrected for the effects caused by sun zenith angle, solar radiance, and atmospheric scattering (Chavez, 1996; Lu *et al.*, 2002), this approach was used in this study for atmospheric correction of TM and HRG images, based on the following equations:

$$R_{\lambda} = PI * D * (L_{\lambda} - L_{\lambda, haze}) / (Esun_{\lambda} * COS(\theta)), \quad (1)$$

$$\text{where } L_{\lambda} = DN_{\lambda} / A_{\lambda}, \text{ for SPOT HRG data, and} \quad (2)$$

$$L_{\lambda} = \text{gain} * DN_{\lambda} + \text{bias}, \text{ for Landsat TM data.} \quad (3)$$

In these equations, L_{λ} is the apparent at-satellite radiance for spectral band λ , DN_{λ} is the digital number for band λ , A_{λ} is the calibration factor for spectral band λ of the HRG image, and R_{λ} is the calibrated reflectance. $L_{\lambda, haze}$ is path radiance, $Esun_{\lambda}$ is exo-atmospheric solar irradiance, D is the distance between Earth and the Sun, and θ is the Sun zenith angle. The path radiance for each band was identified based on the analysis of water bodies and shades in the images.

Wavelet-merging Technique

Images from different sensors contain distinctive features. Integration of multi-sensor or multi-resolution data takes advantage of the strengths of distinct image data for improvement of visual interpretation and quantitative analysis. Solberg *et al.* (1996) broadly divided data fusion methods into four categories: statistical, fuzzy logic, evidential reasoning, and neural network. Pohl and Van Genderen (1998) provided a literature review on the methods of multi-sensor data fusion. Of the many approaches, the intensity-hue-saturation (IHS) transform may be the most frequently used method for improving visual display of multi-sensor data (Welch and Ehlers, 1987). However, the IHS approach can only employ three image bands and the resultant image may not be suitable for further quantitative analysis, such as classification. Principal component analysis (PCA) is often used for data fusion because it can produce an output that can better preserve the spectral integrity of the input dataset. In recent years, the wavelet-merging technique has shown to be another effective approach to generate a better improvement of spectral and spatial information contents (Li *et al.*, 2002; Ulfarsson *et al.*, 2003). Hence, the wavelet-merging technique was used in this research to integrate TM or HRG multispectral bands and the HRG panchromatic band.

The wavelet theory is similar to Fourier transform analysis, but the wavelet transform uses short, discrete wavelets, instead of long continuous waves as in Fourier transforms. One key step in wavelet transform is to select the mother wavelet. The input image is broken down into successively smaller multiples of the mother wavelet. The derived wavelets have many mathematically useful characteristics that make them preferable to simple sine or cosine functions. Once the mother wavelet is defined, a family of multiples is created with incrementally increasing frequency. Then, the image is decomposed by applying coefficients to

each of the waveforms. In theory, an image can be decomposed into high-frequency and low-frequency components. The low-frequency image is the lower spatial resolution image and the high-frequency image is the higher spatial resolution image containing the details of the image. In general, the high spatial resolution image is a single band, such as an HRG panchromatic band in this study. Figure 3 illustrated the concept of data fusion with the discrete wavelet transform based on multi-resolution images. In order to integrate the high spatial information into the multispectral image, it is necessary to select one image from the multispectral image to replace the low-frequency image from the wavelet transform. Different transforms, such as IHS or PCA can be used to create a new image from the multispectral image. In this research, PCA was used to convert the multispectral bands into a new dataset and the first principal component (PC1) was used to replace the low-frequency image, because PC1 contained most of the information. A detailed description of the wavelet-merging technique is found in Lemeshefsky (1999) and the *ERDAS Field Guide* (ERDAS, 2003). During wavelet-merging processing based on TM data, TM bands 1 and 7 were not used because of the high correlations between TM-1 and two other visible bands and between TM SWIR bands 5 and 7. Also, the wavelengths of HRG multispectral bands correspond to TM bands 2 to 5.

Texture Analysis

Previous research has indicated that the grey-level co-occurrence matrix (GLCM) texture measures are important in improving land-cover classification accuracies (Gong *et al.*, 1992; Shaban and Dikshit, 2001). However, for a specific study area, it is often difficult to identify a suitable textural image because it varies with the characteristics of the landscape under investigation, the texture measure selected, the size of the moving window, and the image band (Franklin *et al.*, 1996; Chen *et al.*, 2004). The difficulty in identifying suitable textural images and the computation cost for calculating textures limit extensive use of textures in image classification, especially over a large area. In this research, eight texture measures (i.e., mean, variance, homogeneity, contrast, dissimilarity, entropy, second moment, and correlation) with nine sizes of moving windows (3×3 , 5×5 , 7×7 , 9×9 , 11×11 , 15×15 , 19×19 , 25×25 , and 31×31) on the HRG panchromatic band were examined. Because not

all textural images are useful in improving vegetation classification performance, it is necessary to identify the best textural images that can maximize the separation of vegetation classes. Therefore, the textural images were rescaled to an 8-bit integer format (0 to 255). The texture feature for each training sample plot was extracted, and separability was analyzed using a transformed divergence (TD) algorithm (Mausel *et al.*, 1993; Landgrebe, 2003). The textural images with TD values greater than 1,900 were initially selected for further analysis. Pearson's correlation analysis was used to analyze the correlation coefficients for the initially selected textural images. The textural images with high separability and low correlation coefficients were finally selected. If two or more textural images were used, the following equation was used to identify the best textural image combination:

$$\text{Best Texture Combination (BTC)} = \frac{\sum_{i=1}^n TD_i}{\sum_{j=1}^n R_{ij}}, \quad (4)$$

where TD_i is the transformed divergence value based on the training sample plots on the textural image i , R_{ij} is the correlation coefficient between two textural images i and j , and n is the number of textural images.

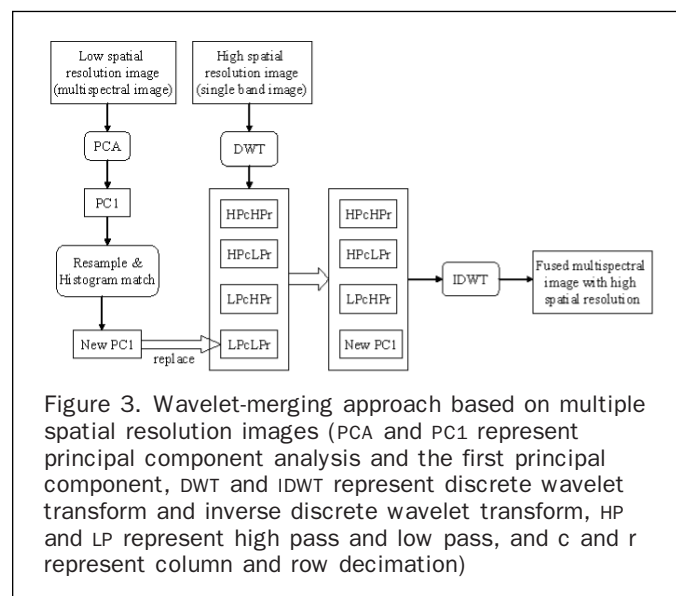
Analysis of Image Classification Results

The potential images used for image classification included TM or HRG multispectral images, the data-fused images based on TM (or HRG) multispectral and HRG panchromatic images, the combinations of HRG multispectral and textural images (from one to four), and the combinations of HRG multispectral and panchromatic data-fused images and textural images (from one to four). The image classifications based on the extensive combinations attempted to answer the following questions:

1. Comparing HRG and TM multispectral images, can the HRG image, with its higher spatial resolution, improve vegetation classification performance?
2. Comparing data-fused images between TM multispectral and HRG panchromatic images and between HRG multispectral and panchromatic images, which one can provide better vegetation classification accuracy? Can the data-fused images improve the vegetation classification accuracy comparing their original multispectral images?
3. Can incorporation of textural images as extra bands into multispectral images improve vegetation classification performance? Can incorporation of textural images into HRG multispectral-panchromatic data-fused images further improve vegetation classification accuracy? How many textural images are suitable?

Before implementing image classification, all images, including multispectral and textural, were rescaled to 8-bit integer format (0 to 255). Then non-vegetation types (e.g., water, urban and residential area, and bare soils) were masked, based on the analysis of an unsupervised classification (ISODATA) image on the HRG multispectral image. In the vegetated areas, a classification system with nine vegetation types was adopted (see Table 1 for the characteristics of each vegetation type). About 12 to 20 sample plots were selected for each class, with a polygon size of 9 to 40 pixels being used for each plot depending on the homogeneity of the vegetation type. A maximum likelihood classifier was then used to classify each combined image. The same training sample plots were used to implement image classification for each image combination.

In order to evaluate the classification accuracy for each image combination, a common method for accuracy assessment is through the use of an error matrix. Previous literature has provided the meanings and calculation methods for overall accuracy, producer's accuracy, user's accuracy,



and kappa coefficient (Congalton, 1991; Smits *et al.*, 1999; Foody, 2002). In this study, a total of 306 test samples were used for accuracy assessment. Most of these test plots were collected during fieldwork in 2002 and 2003. The HRG and Ikonos color composites were also used to collect more test samples based on visual interpretation. The second author has studied this area for more than a decade and collected extensive datasets through LBA and Embrapa projects, which is important for the validation of the classification procedures. The producer's accuracy and user's accuracy for each class, and overall accuracy and kappa coefficient for each image combination were calculated based on the error matrix.

Results

Analysis of Textural Images

Different texture measures have various capabilities in separating vegetation classes. Different sizes of the moving window on the same texture measure also affect this capability. Therefore, there exists a best combination of texture measure and size of moving window suitable for the separation of vegetation classes. Table 2 summarized the separability analysis results of 72 test cases. It indicates that the size of the moving window is important in the separability of vegetation classes. The best window size varies, depending on the use of texture measures. For example, the best sizes for entropy and second-moment texture measures were 9×9 and 11×11 , respectively, but for dissimilarity and contrast texture measures, the best window sizes were 15×15 and 25×25 , respectively. In general, window sizes that were too small, such as 3×3 and 5×5 , or too large, such as 31×31 , produced poor separability of vegetation classes. Some texture measures, such as entropy and second-moment texture measures, provided better separability of vegetation classes than others, such as variance and correlation texture measures.

Visual analysis of the textural images indicated that some textural images provided very similar textural information, implying that not all textural images were needed in vegetation classification. Our analysis of the correlation coefficients

between the textural images indicated that the textural images from the same texture measure but different window sizes were strongly correlated; for example, the coefficient between two textural images from entropy with 9×9 and 11×11 windows was as high as 0.97. On the other hand, some different texture measures with similar window sizes were also strongly correlated, such as between entropy, dissimilarity, and second moment because they highlighted the similar (or homogeneous) information. The analysis of Best Texture Combination (BTC) helps identify the textural images with the best capability in vegetation separation but less correlation each other. The identified four textural images were from the entropy texture measure with a window size of 9×9 , the second moment with 11×11 , dissimilarity with 15×15 , and contrast with 25×25 (Figure 4). The selected four textural images have a common feature: highlighting the linear features such as roads and boundaries between land-covers. The selected textural images were then incorporated into spectral features as extra bands to explore their roles in improving vegetation classification performance.

Analysis of Image Classification Results

Higher spatial resolution images have an important role in improving successional vegetation classification accuracy, while relatively lower spatial resolution images are helpful for the primary forest classification (Table 3). For example, HRG images (e.g., HRG-MS and HRG-Fusion) provided higher classification accuracies in SS1, SS2, and SS3 than TM images, but TM images (e.g., TM-2-3-4-5 and TM-ALL) provided higher classification accuracies for the upland dense forest and flooding forests. Higher spatial resolution in HRG multispectral images reduced the mixed pixel problem, resulting in improved successional vegetation classification accuracy, but higher spatial resolution also increased spectral variations, especially in primary forests, because of their complex forest stand structure and canopy shadows, resulting in poor classification accuracies. In this situation, relatively lower spatial resolution images such as TM with 30-meter spatial resolution reduced the spectral variation within the primary forests, thus produced better classification accuracy, but this spatial resolution image included mainly mixed pixels for the successional vegetation.

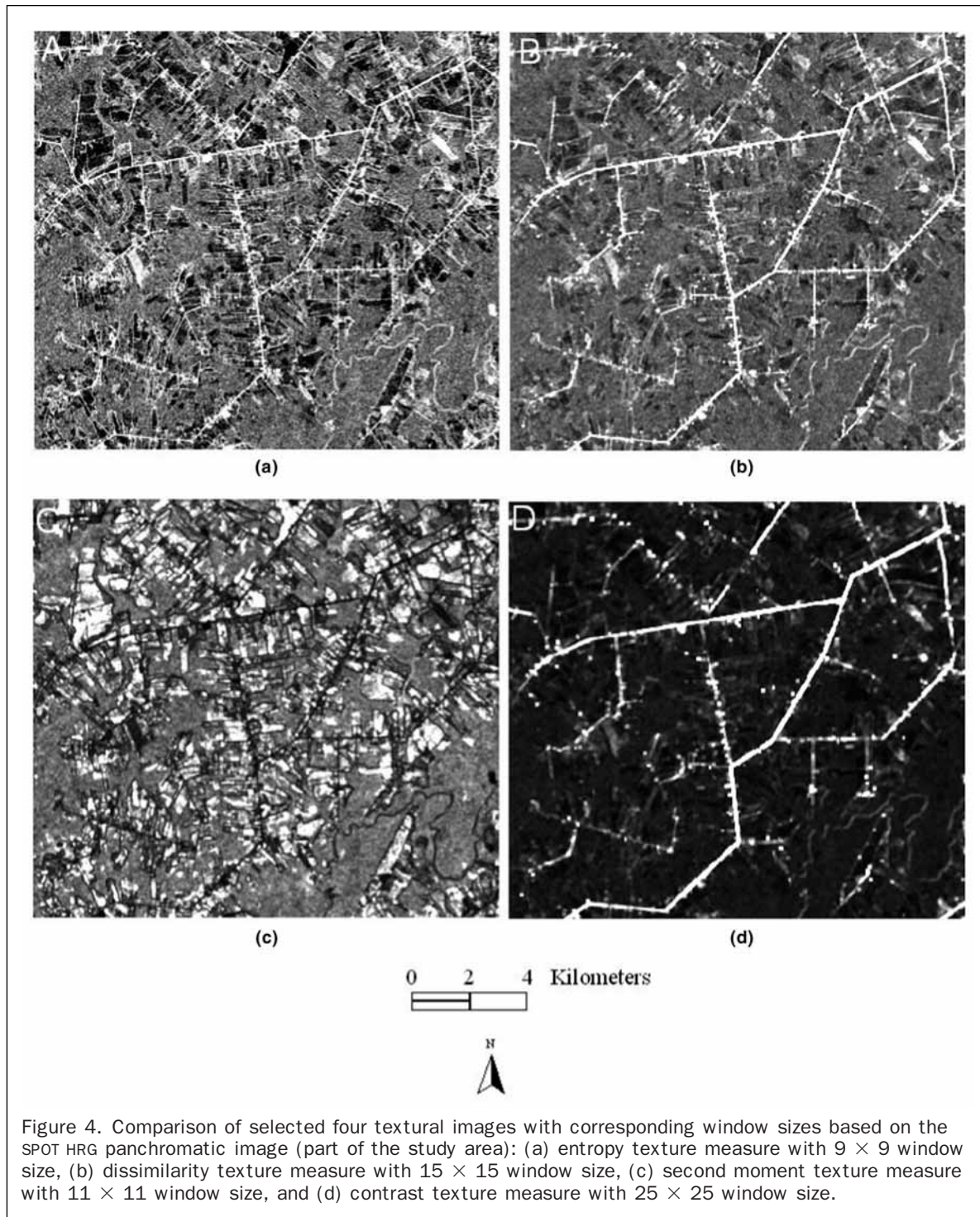
Interesting to note in Table 3 is that the HRG multispectral and panchromatic data-fused images slightly improved overall classification accuracy, but the TM multispectral and HRG panchromatic data-fused images significantly reduced the overall classification accuracy (61.8 percent for HRG-Fusion versus 52.9 percent for TM-Fusion). The TM-Fusion approach especially decreased the classification accuracies of SS2, SS3, DGP, AGF, and UOF. Although the TM multispectral and HRG panchromatic data-fused image improved visual interpretation effects, the large difference in spatial resolutions between TM and HRG panchromatic images (30 m versus 5 m) exaggerated spectral variations within the same land-cover classes and introduced noise in the fused images, thus reducing image classification performance. This implies that direct use of the data-fused images without further image processing to remove the noise is not suitable for vegetation classification.

Overall, the HRG-Fusion provided the best classification accuracies of 61.8 percent for nine vegetation classes, a 3.1 percent increase in kappa coefficient compared with HRG-MS, and 4.6 percent increase compared with the TM-ALL approach. Comparing TM-2-3-4-5 and TM-ALL images, although both have similar overall classification accuracy (approximately 58 percent), the TM-2-3-4-5 data provided slightly better classification accuracies for most of the vegetation classes than TM-ALL data, implying that the addition of more spectral bands with high correlation coefficients to each other may decrease classification accuracy.

TABLE 2. SEPARABILITY ANALYSIS RESULTS BASED ON TRANSFORMED DIVERGENCE ALGORITHM

Window Size	Separability Based on a Single Textural Image							
	ME	VA	HO	CO	DI	EN	SM	CC
3×3	1504	852	1397	1387	1680	1322	1295	663
5×5	1777	1316	1560	1356	1752	1779	1716	848
7×7	1862	1527	1641	1600	1847	1946	1916	1266
9×9	1879	1635	1637	1685	1834	1974	1987	1384
11×11	1865	1563	1606	1720	1843	1969	1989	1397
15×15	1840	1516	1673	1806	1924	1957	1968	1408
19×19	1818	1551	1659	1966	1865	1865	1944	1253
25×25	1760	1315	1625	1984	1255	1613	1098	1253
31×31	1570	1414	1768	1931	850	1492	892	1211

Note: ME, VA, HO, CO, DI, EN, SM, and CC represent the texture measures of mean, variance, homogeneity, contrast, dissimilarity, entropy, second moment, and correlation respectively. The maximum value of transformed divergence (TD) is 2000, the higher of the TD values, the better separability between the vegetation classes. Usually, a TD value of greater than 1,900 is regarded as good separability between the selected classes. So the TD values with greater than 1,900 are highlighted in bold. These textural images are selected for further analysis, such as correlation coefficients, and calculation of Best Texture Combination, in order to find suitable textural images for vegetation classification.



Incorporation of textural and multispectral images improved vegetation classification performance (Table 4). For example, the combination of entropy texture image and HRG multispectral image (MS-Txt1) improved the vegetation classification accuracies for all except SS1. Overall classification accuracy and kappa coefficient were increased by 5.2 percent and 5.8 percent, respectively, compared with the results from the original HRG multispectral image. The incorporation of textural images and HRG-Fusion images, as well as two textural and HRG multispectral images (MS-Txt2)

can further improve the classification accuracy. However, use of more textural images (e.g., MS-Txt3, MS-Txt4, or Fusion-Txt3 and Fusion-Txt4) cannot further improve classification accuracy because of the correlation between the images. Table 4 also indicates that use of textural images was especially helpful in improving primary forest classification. This implies that textural images can reduce the spectral variations of primary forests caused by complex forest stand structure and canopy shadows in the high spatial resolution image.

TABLE 3. COMPARISON OF CLASSIFICATION RESULTS AMONG DIFFERENT PROCESSING PROCEDURES BASED ON DATA FUSION

Class	HRG-MS		HRG-Fusion		TM-Fusion		TM-2-3-4-5		TM-ALL	
	PA	UA	PA	UA	PA	UA	PA	UA	PA	UA
UDF	62.5	92.6	75.0	96.8	85.0	91.9	85.0	100.0	82.5	91.7
UOF	58.3	58.3	66.7	72.7	25.0	13.6	41.7	38.5	83.3	31.3
FLF	75.0	42.9	87.5	50.0	87.5	41.2	87.5	58.3	87.5	58.3
SS3	66.7	30.0	55.6	20.8	11.1	7.1	66.7	23.1	33.3	20.0
SS2	47.2	38.6	41.7	35.7	25.0	25.0	36.1	35.1	11.1	23.5
SS1	62.0	63.3	62.0	66.0	66.0	56.9	58.0	60.4	68.0	51.5
DGP	63.2	49.0	68.4	55.3	42.1	48.5	63.2	61.5	57.9	51.2
CUP	66.0	86.8	66.0	91.7	66.0	86.8	68.0	91.9	66.0	89.2
AGF	50.8	76.2	54.0	81.0	41.3	70.3	58.7	75.5	49.2	75.6
OCA	59.2		61.8		52.9		58.2		57.8	
KAP	53.2		56.3		46.3		52.1		51.7	

Notes: 1. The nine vegetation classes: UDF, UOF, FLF, SS3, SS2, SS1, DGP, CUP, and AGF, represent upland dense forest, upland open forest, flooding forest, advanced successional vegetation, intermediate successional vegetation, initial successional vegetation, degraded pasture, cultivated pasture, and agroforestry/perennial agriculture, respectively.
 2. HRG-MS, HRG-Fusion, TM-Fusion, TM-2-3-4-5, and TM-ALL represent the data sets: HRG multispectral image, data fused image based on HRG multispectral and panchromatic data, data fused image based on TM multispectral and HRG panchromatic data, TM four bands 2,3,4, and 5, and TM six reflective bands.
 3. OCA and KAP represent overall classification accuracy and kappa coefficient.
 4. PA and UA represent producer's accuracy and user's accuracy.

TABLE 4. COMPARISON OF CLASSIFICATION RESULTS AMONG DIFFERENT COMBINATIONS OF SPECTRAL AND TEXTURAL IMAGES

Class	HRG-MS		MS-Txt1		MS-Txt2		MS-Txt3		MS-Txt4		
	PA	UA	PA	UA	PA	UA	PA	UA	PA	UA	
Based on original HRG image	UDF	62.5	92.6	70.0	96.6	67.5	93.1	60.0	92.3	60.0	92.3
	UOF	58.3	58.3	91.7	73.3	100.0	75.0	100.0	70.6	100.0	66.7
	FLF	75.0	42.9	87.5	50.0	75.0	46.2	75.0	37.5	62.5	33.3
	SS3	66.7	30.0	77.8	43.8	66.7	35.3	77.8	28.0	77.8	20.0
	SS2	47.2	38.6	50.0	45.0	61.1	43.1	52.8	43.2	44.4	51.6
	SS1	62.0	63.3	54.0	62.8	54.0	62.8	52.0	59.1	50.0	56.8
	DGP	63.2	49.0	68.4	51.0	71.1	50.9	73.7	53.9	73.7	52.8
	CUP	66.0	86.8	80.0	95.2	84.0	95.5	84.0	95.5	84.0	97.7
	ACF	50.8	76.2	52.4	68.8	46.0	85.3	44.4	87.5	44.4	82.4
	OCA	59.2		64.4		64.7		62.8		61.1	
KAP	53.2		59.0		59.5		57.5		55.8		
Class	HRG-Fusion		Fusion-Txt1		Fusion-Txt2		Fusion-Txt3		Fusion-Txt4		
	PA	UA	PA	UA	PA	UA	PA	UA	PA	UA	
Based on HRG data fused image	UDF	75.0	96.8	77.5	96.9	80.0	97.0	82.5	97.1	80.0	97.0
	UOF	66.7	72.7	83.3	83.3	83.3	90.9	83.3	90.9	91.7	84.6
	FLF	87.5	50.0	87.5	53.9	87.5	58.3	87.5	58.3	75.0	50.0
	SS3	55.6	20.8	55.6	26.3	55.6	29.4	66.7	27.3	77.8	23.3
	SS2	41.7	35.7	50.0	42.9	66.7	41.4	61.1	40.7	41.7	46.9
	SS1	62.0	66.0	64.0	66.7	60.0	71.4	54.0	65.9	66.0	62.3
	DGP	68.4	55.3	65.8	55.6	73.7	54.9	76.3	53.7	73.7	56.0
	CUP	66.0	91.7	80.0	95.2	82.0	95.4	84.0	95.5	84.0	97.7
	AGF	54.0	81.0	50.8	72.7	39.7	80.7	38.1	85.7	41.3	83.9
	OCA	61.8		65.4		66.0		65.4		65.4	
KAP	56.3		60.2		61.1		60.4		60.4		

Notes: 1. Txt1: One textural image developed from the entropy texture measure with a window size of 9×9 pixels on the SPOT panchromatic image
 2. Txt2: Txt1 plus another textural image developed from the dissimilarity texture measure with a window size of 15×15 pixels
 3. Txt3: Txt2 plus another textural image developed from the second-moment texture measure with a window size of 19×19 pixels
 4. Txt4: Txt3 plus another textural image developed from the contrast texture measure with a window size of 25×25 pixels
 5. OCA means overall classification accuracy; KAP means kappa coefficient; PA and UA represent producer's and user's accuracy; MS represents multispectral images; Fusion means data fused image based on HRG multispectral and panchromatic data.

Discussion

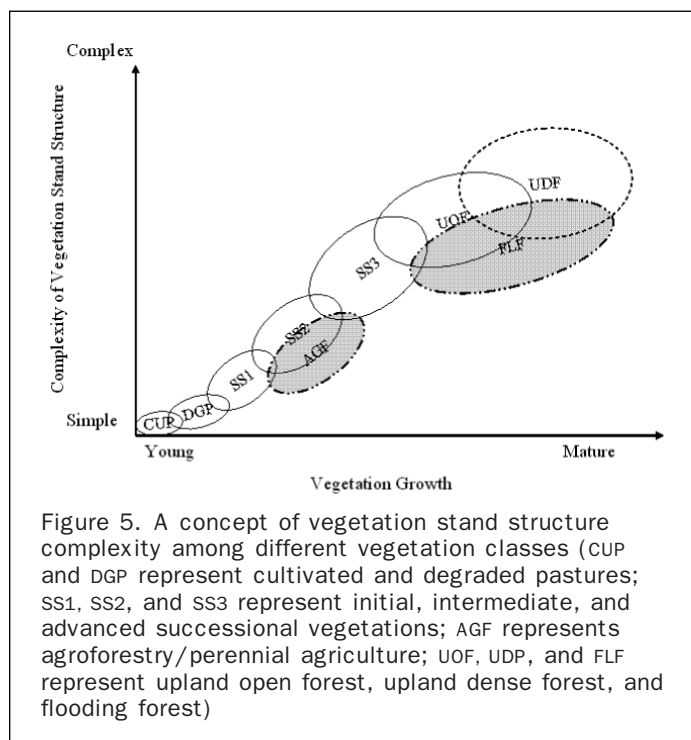
The complex biophysical environments in the moist tropical region may be the most important factor resulting in the difficulty of vegetation classification. Based on the vegetation vertical structure complexity (Lu, 2005a), a concept showing the relationships among the vegetation types is illustrated in Figure 5. Degraded pastures can be regarded as a transition between cultivated pastures and SS1, because some saplings and seedlings appeared in degraded pastures indicating the degraded pastures may become SS1 after a couple years, if they are not properly managed. Also, if no disturbance occurs, SS1 will progress to SS2 and then to SS3. However, there are no clear boundaries between the adjacent stages that separate SS2 from SS1 and SS3 because of the smooth transitions in their vegetation stand structures. Therefore, classification of successional vegetation stages is often difficult, even on the ground. Another difficulty is separating AGF from successional vegetations. The agroforestry/perennial agriculture class can include a variety of vegetation types, from coffee, cocoa, or rubber tree plantations to arrangements of many plants, including successional and economic species. This class is often confused with different successional stages, especially SS2. Also, agroforestry/perennial agriculture and different successional vegetation stages usually appeared in small patches in the landscape (i.e., 0.5 to 3 ha). This implies that most of these vegetation types appear on Landsat TM images as mixed pixels. This often results in difficulty in collecting sufficient and suitable training and test samples for these vegetation classes. The trend toward land-use intensification has reduced the extension of successional vegetation patches and shortened the cycle of conversion of fallow areas into agricultural production. Thus, use of subpixel information benefit these vegetation classification accuracies (Roberts *et al.*, 2002; Lu *et al.*, 2003b). In this study area, lack of typical SS3 samples is another important factor resulting in poor SS3 classification accuracy. The selected SS3 samples are mainly in early stages of advanced secondary succession

and often confused with old SS2 vegetation because of their similar vegetation stand structure. The limitation in finding SS3 areas also created difficulties for the selection of sufficient test sample plots for accuracy assessment. In this situation, the use of expert rules based on the forest stand structure can significantly improve the classification accuracies (Lu, 2005a).

Classification of primary forests into multiple classes is also a challenge because the similar forest stand structures and the influence of canopy shadows which leads to data saturation in optical remote-sensing data. However, the abundant moisture can reduce the reflectance values of flooding forests. Poor soil conditions and the topographic effects of upland open forests on steep slopes may produce different tree species composition and vegetation vigor compared to upland dense forests. Conversely, non-forest vegetations (e.g., successional vegetations, agroforestry) are usually distributed in relatively flat areas with easy access. Topography and moisture are not important factors in separating successional vegetation stages in this study area.

The optical sensor data, such as Landsat TM and SPOT HRG that mainly capture canopy and associated shadow information, create difficulties in vegetation classification. The shadow problem often reduces vegetation reflectance, and the complex forest stand structure causes data saturation making it difficult to classify forest and advanced successional vegetation classes, even though their biomass densities may vary significantly (Lu, 2005b). Use of radar data, especially the long wavelengths such as L- and P-bands, may improve the vegetation classification because radar can penetrate the canopy to a certain depth to capture more information under the canopy (Leckie, 1998; Santos *et al.*, 2003). The integration of optical sensor and radar data may provide new insights for vegetation classification in the moist tropical regions.

This research has shown the importance of high spatial resolution images in improving vegetation classification accuracies, especially the successional vegetation. High spatial resolution images greatly reduce the mixed pixel problem because non-forest vegetation often has small patch sizes on the ground. On the other hand, high spatial resolution images have rich spatial information, but also show high spectral variation within the same land-cover class. Effective use of spatial information and reduction of the impacts of spectral variation are critical for improving overall classification performance. This study has indicated the importance of textural images in improving vegetation classification accuracies. One critical step in a study is to identify suitable textural images that can provide the best separability for the specified classes. However, selection of suitable textural images is still a challenge, because textures vary with the characteristics of the landscape under investigation and images used. In particular, the selection of a suitable size of moving window is important for a textural image, but no window size is perfect for all vegetation types because the field sizes of the vegetation types vary greatly, i.e., from less than one hectare for some successional vegetation and agroforestry to hundreds of hectares for some primary forests. Therefore, there are tradeoffs among moving window size, spatial resolution of images, and the sizes of vegetation types on the ground. For this study, the selection of window size is based on the overall separability of vegetation types, but the best window size for extraction of textural images for the separation of non-forest vegetation types and the separation of primary forest classes may vary because of their different vegetation stand structures and patch sizes. A stratification of primary forests and non-forest vegetation types may be necessary before the selection of suitable textural images. Two approaches may be used to evaluate the



textural images: qualitative assessment based on visual interpretation to see whether the specified information was highlighted or not on the selected textural image; and quantitative analysis, such as the calculation of separability of vegetation classes based on training samples, as used in this paper. For the selection of a single textural image, one can select the textural image with highest separability, but for the selection of two or more textural images, the BTC approach developed in this paper provides an easy way to identify the suitable combination of textural images that can be used for improving classification performance.

Conclusions

High spatial resolution images benefit the classification of successional vegetation stages, and relatively low spatial resolution is useful for primary forests. The incorporation of textural images into an HRG multispectral image is an effective approach to improve vegetation classification performance. The entropy or second-moment texture measure with a window size of 9×9 or 11×11 pixels provided the best separability for vegetation classes. Overall, vegetation classification with optical sensor data in the moist tropical region remains difficult, especially for the separation of different successional vegetation stages and the separation of agroforestry from other non-forest vegetation types. More research is needed to incorporate optical sensor and radar data to improve vegetation classification.

Acknowledgments

The authors wish to thank the three anonymous reviewers for their constructive suggestions and comments. The authors also thank the National Science Foundation (Grant #99-06826), the National Aeronautics and Space Administration (Grant #NCC5-695), and the Brazil's Embrapa Satellite Monitoring for their support. This project is part of the Large Scale Biosphere-Atmosphere Experiment in Amazônia (LBA) Program, LC-09 and LC-34, which aims to examine the human and physical dimensions of land-use/land-cover change.

References

- Adams, J.B., D.E. Sabol, V. Kapos, R.A. Filho, D.A. Roberts, M.O. Smith, and A.R. Gillespie, 1995. Classification of multispectral images based on fractions of endmembers: Application to land-cover change in the Brazilian Amazon, *Remote Sensing of Environment*, 52:137–154.
- Batistella, M., 2001. *Landscape Change and Land-use/Land-cover Dynamics in Rondônia, Brazilian Amazon*, Ph.D. dissertation, Indiana University, Bloomington: Indiana, 399 p.
- Batistella, M., S. Robeson, and E.F. Moran, 2003. Settlement design, forest fragmentation, and landscape change in Rondônia, Amazônia, *Photogrammetric Engineering & Remote Sensing*, 69:805–812.
- Batistella, M., and E.F. Moran, 2005. Dimensões humanas do uso e cobertura das terras na Amazônia: Uma contribuição do LBA, *Acta Amazonica*, 35:239–247.
- Bognola, I.A., and A.F. Soares, 1999. *Solos das "glebas 01, 02, 03 e 06" do Município de Machadinho d'Oeste, RO. Pesquisa em Andamento*, No.10, Embrapa Monitoramento por Satélite, Campinas, Brazil, 7 p.
- Brondízio, E.S., E.F. Moran, P. Mausel, and Y. Wu, 1996. Land cover in the Amazon estuary: Linking of the Thematic Mapper with botanical and historical data, *Photogrammetric Engineering & Remote Sensing*, 62(9):921–929.
- Canty, M.J., A.A. Nielsen, and M. Schmidt, 2004. Automatic radiometric normalization of multitemporal satellite imagery, *Remote Sensing of Environment*, 91:441–451.
- Chavez, P.S. Jr., 1996. Image-based atmospheric corrections Revisited and improved, *Photogrammetric Engineering & Remote Sensing*, 62(10):1025–1036.
- Chen, D., D.A. Stow, and P. Gong, 2004. Examining the effect of spatial resolution and texture window size on classification accuracy: An urban environment case, *International Journal of Remote Sensing*, 25:2177–2192.
- Congalton, R.G., 1991. A review of assessing the accuracy of classification of remotely sensed data, *Remote Sensing of Environment*, 37:35–46.
- ERDAS, 2003. *ERDAS Field Guide*, Seventh edition, Leica Geosystems GIS & Mapping, LLC, Atlanta, Georgia.
- Foody, G.M., G. Palubinskas, R.M. Lucas, P.J. Curran, and M. Honzák, 1996. Identifying terrestrial carbon sinks: Classification of successional stages in regenerating tropical forest from Landsat TM data, *Remote Sensing of Environment*, 55:205–216.
- Foody, G.M., 2002. Status of land cover classification accuracy assessment, *Remote Sensing of Environment*, 80:185–201.
- Franklin, S.E., M.A. Wulder, and M.B. Lavigne, 1996. Automated derivation of geographic window sizes for remote sensing digital image texture analysis, *Computers and Geosciences*, 22:665–673.
- Gong, P., D.J. Marceau, and P.J. Howarth, 1992. A comparison of spatial feature extraction algorithms for land-use classification with SPOT HRV data, *Remote Sensing of Environment*, 40:137–151.
- Haack, B.N., E.K. Solomon, M.A. Bechdol, and N.D. Herold, 2002. Radar and optical data comparison/integration for urban delineation: A case study, *Photogrammetric Engineering & Remote Sensing*, 68(12):1289–1296.
- Haralick, R.M., K. Shanmugam, and I. Dinstein, 1973. Textural features for image classification, *IEEE Transactions on Systems, Man and Cybernetics*, SMC-3:610–620.
- Kashyap, R.L., R. Chellappa, and A. Khotanzad, 1982. Texture classification using features derived from random field models, *Pattern Recognition Letters*, 1:43–50.
- Landgrebe, D.A., 2003. *Signal Theory Methods in Multispectral Remote Sensing*, Hoboken, New Jersey, John Wiley and Sons, 508 p.
- Laurance, W., A.K.M. Albernaz, P.M. Fearnside, H.L. Vasconcelos, and L.V. Ferreira, 2004. Deforestation in Amazonia, *Science*, 304:1109.
- Leckie, D.G., 1998. Forestry applications using imaging radar, *Principles and Applications of Imaging Radar, Manual of Remote Sensing*, Third edition, Vol. 2 (F. M. Henderson and A. J. Lewis, editors), John Wiley and Sons, New York, pp. 437–509.
- Lemeshewsky, G.P., 1999. Multispectral multisensor image fusion using wavelet transforms, *Visual Image Processing VIII* (S. K. Park and R. Juday, editors), Proceedings of SPIE 3716, pp. 214–222.
- Li, S., J.T. Kwok, and Y. Wang, 2002. Using the discrete wavelet frame transform to merge Landsat TM and SPOT panchromatic images, *Information Fusion*, 3:17–23.
- Lu, D., 2005a. Integration of vegetation inventory data and Landsat TM image for vegetation classification in the western Brazilian Amazon, *Forest Ecology and Management*, 213:369–383.
- Lu, D., 2005b. Aboveground biomass estimation using Landsat TM data in the Brazilian Amazon, *International Journal of Remote Sensing*, 26:2509–2525.
- Lu, D., P. Mausel, E. Brondízio, and E. Moran, 2002. Assessment of atmospheric correction methods for Landsat TM data applicable to Amazon basin LBA research, *International Journal of Remote Sensing*, 23:2651–2671.
- Lu, D., P. Mausel, E. Brondízio, and E. Moran, 2003a. Classification of successional forest stages in the Brazilian Amazon basin, *Forest Ecology and Management*, 181:301–312.
- Lu, D., E. Moran, and M. Batistella, 2003b. Linear mixture model applied to Amazonian vegetation classification, *Remote Sensing of Environment*, 87:456–469.
- Lu, D., P. Mausel, M. Batistella, and E. Moran, 2004. Comparison of land-cover classification methods in the Brazilian Amazon basin, *Photogrammetric Engineering & Remote Sensing*, 70(7): 723–731.

- Lucas, R. M., M. Honzák, P.J. Curran, G.M. Foody, R. Milne, T. Brown, and S. Amaral, 2000. The regeneration of tropical forests within the Legal Amazon, *International Journal of Remote Sensing*, 21:2855–2881.
- Marceau, D.J., P.J. Howarth, J.M. Dubois, and D.J. Gratton, 1990. Evaluation of the grey-level co-occurrence matrix method for land-cover classification using SPOT imagery, *IEEE Transactions on Geoscience and Remote Sensing*, 28:513–519.
- Mausel, P., Y. Wu, Y. Li, E. Moran, and E. Brondízio, 1993. Spectral identification of succession stages following deforestation in the Amazon, *Geocarto International*, 8:61–72.
- Moran, E.F., E. Brondízio, P. Mausel, and Y. Wu, 1994. Integrating Amazonian vegetation, land use, and satellite data, *Bioscience*, 44:329–338.
- Pohl, C., and J.L. van Genderen, 1998. Multisensor image fusion in remote sensing: Concepts, methods, and applications, *International Journal of Remote Sensing*, 19:823–854.
- Roberts, D.A., I. Numata, K. Holmes, G. Batista, T. Krug, A. Monteiro, B. Powell, and O.A. Chadwick, 2002. Large area mapping of land-cover change in Rondonia using decision tree classifiers, *Journal of Geophysical Research*, 107(D20), 8073 LBA 40–1 to 40–18.
- Rondônia, 1998. *Diagnóstico Sócio-econômico do Estado de Rondônia e Assistência Técnica para Formulação da Segunda Aproximação do Zoneamento Sócio-econômico-ecológico – Climatologia*, Vol. 1, Governo de Rondônia/PLANAFLORO, Porto Velho, Brasil.
- Santos, J.R., C.C. Freitas, L.S. Araujo, L.V. Dutra, J.C. Mura, F.F. Gama, L.S. Soler, and S.J.S. Sant' Anna, 2003. Airborne P-band SAR applied to the aboveground biomass studies in the Brazilian tropical rainforest, *Remote Sensing of Environment*, 87:482–493.
- Shaban, M.A., and O. Dikshit, 2001. Improvement of classification in urban areas by the use of textural features: The case study of Lucknow city, Uttar Pradesh, *International Journal of Remote Sensing*, 22:565–593.
- Shaban, M.A., and O. Dikshit, 2002. Evaluation of the merging of SPOT multispectral and panchromatic data for classification of an urban environment, *International Journal of Remote Sensing*, 23:249–262.
- Skole, D.L., W.H. Chomentowski, W.A. Salas, and A.D. Nobre, 1994. Physical and human dimension of deforestation in Amazonia, *BioScience*, 44:314–328.
- Smits, P.C., S.G. Dellepiane, and R.A. Schowengerdt, 1999. Quality assessment of image classification algorithms for land-cover mapping: A review and a proposal for a cost-based approach, *International Journal of Remote Sensing*, 20:1461–1486.
- Solberg, A.H.S., T. Taxt, and A.K. Jain, 1996. A Markov random field model for classification of multisource satellite imagery, *IEEE Transactions on Geoscience and Remote Sensing*, 34:100–112.
- Song, C., C.E. Woodcock, K.C. Seto, M.P. Lenney, and S.A. Macomber, 2001. Classification and change detection using Landsat TM data: When and how to correct atmospheric effect, *Remote Sensing of Environment*, 75:230–244.
- Tokola, T., S. Löfman, and A. Erkkilä, 1999. Relative calibration of multitemporal Landsat data for forest cover change detection, *Remote Sensing of Environment*, 68:1–11.
- Ulfarsson, M.O., J.A. Benediktsson, and J.R. Sveinsson, 2003. Data fusion and feature extraction in the wavelet domain, *International Journal of Remote Sensing*, 24:3933–3945.
- Vermote, E., D. Tanre, J.L. Deuze, M. Herman, and J.J. Morcrette, 1997. Second simulation of the satellite signal in the solar spectrum, 6S: An overview, *IEEE Transactions on Geoscience and Remote Sensing*, 35:675–686.
- Vieira, I.C.G., A.S. de Almeida, E.A. Davidson, T.A. Stone, C.J.R. de Carvalho, and J.B. Guerrero, 2003. Classifying successional forests using Landsat spectral properties and ecological characteristics in eastern Amazonia, *Remote Sensing of Environment*, 87:470–481.
- Welch, R., and M. Ehlers, 1987. Merging multi-resolution SPOT HRV and Landsat TM data, *Photogrammetric Engineering & Remote Sensing*, 53(3):301–303.
- Yocky, D.A., 1996. Multiresolution wavelet decomposition image merger of Landsat Thematic Mapper and SPOT panchromatic data, *Photogrammetric Engineering & Remote Sensing*, 62(10):1067–1074.

(Received 26 April 2006; accepted 13 June 2006; revised 18 August 2006)

ACT Publications 2007

No. 07-01

Lu, D., M. Batistella, P. Mausel and E. Moran. 2007. Mapping and Monitoring Land Degradation Risks in the Western Brazilian Amazon Using Multitemporal Landsat TM/ETM+ Images. *Land Degradation and Development* 18: 41-54.

No. 07-02

Siqueira, A.D., A.O. D'Antona, M.F. D'Antona, and E.F. Moran. 2007. Embodied Decisions: Reversible and Irreversible Contraceptive Methods among Rural Women in the Brazilian Amazon. *Human Organization* 66(2): 185-195.

No. 07-03

Batistella, M. and E. F. Moran. 2007. A Heterogeneidade das Mudanças de Uso e Cobertura das Terras na Amazônia: Em Busca de um Mapa da Estrada. In *Dimensoes Humanas da Biosfera-atmosfera na Amazônia*. W.M. da Costa, B.K. Becker and D.S. Alves (orgs.) São Paulo: Editora da Universidade de São Paulo.

No. 07-04

VanWey, L., A. O. D'Antona, and E.S. Brondizio. 2007. Household Demographic Change and Land Use/Land Cover Change in the Brazilian Amazon. *Population and Environment* 28:163-185.

No. 07-05

Liu, J., T. Dietz, S.R. Carpenter, M. Alberti, C. Folke, E. Moran, A.N. Pell, P. Deadman, T. Kratz, J. Lubchenco, E. Ostrom, Z. Ouyang, W. Provencher, C.L. Redman, S.H. Schneider, and W.W. Taylor. 2007. Complexity of Coupled Human and Natural Systems. *Science* 314:1513-1516.

No. 07-06

Lu, D, M. Batistella, and E. Moran. Land-cover classification in the Brazilian Amazon with the integration of Landsat ETM+ and Radarsat data. *International Journal of Remote Sensing* 28(24):5447-5459.